

Service Parts List (Kits)

Model Ref.:- V10

SERIES A

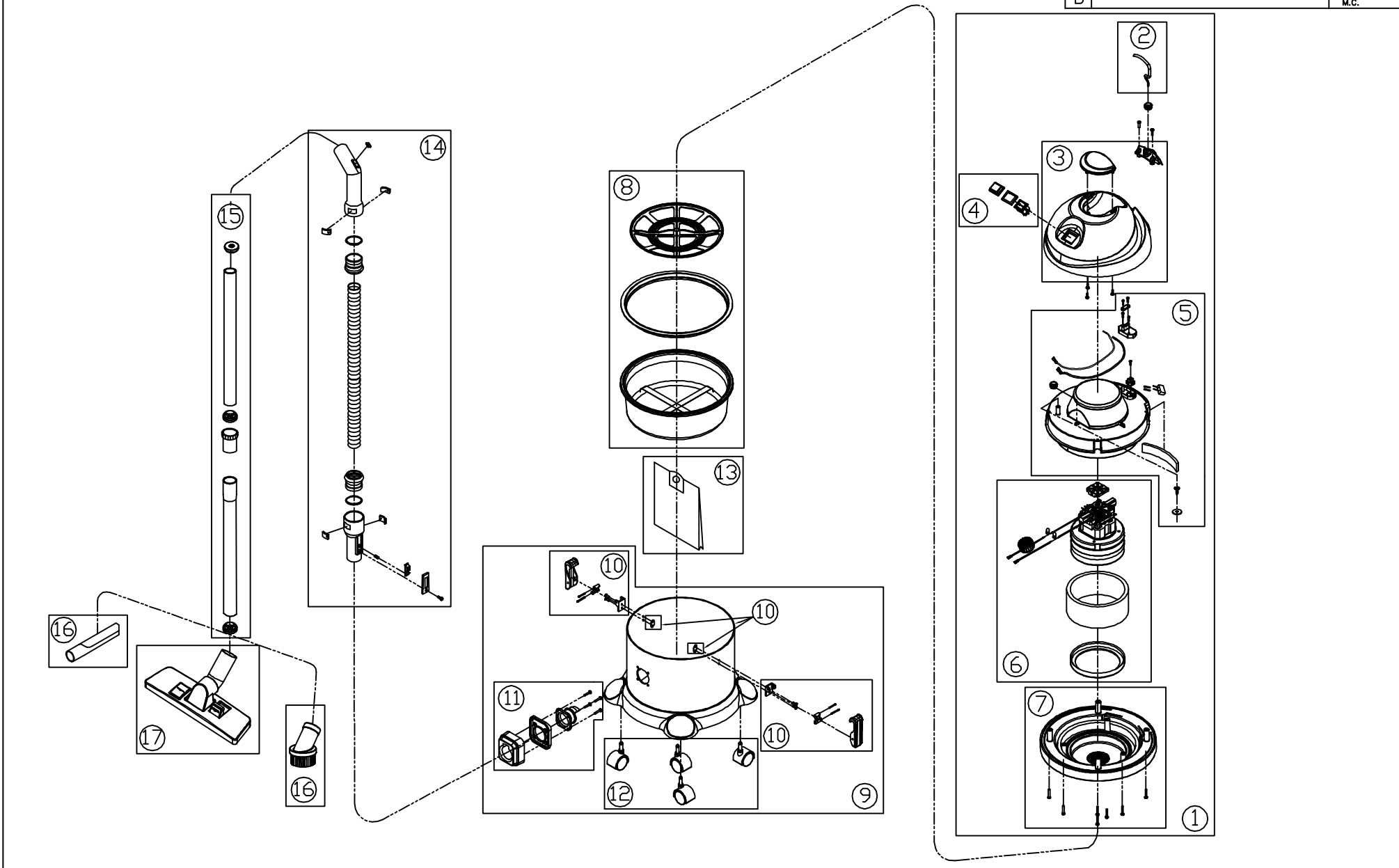
Service Parts List (Kits) Issue 2 Dated 04-October-2007

Ref. Drawing 09-1085-0000 Issue B Dated 04-October-2007

| Drawing Ref. | Part Number | DESCRIPTION | Qty Per Kit |
|--------------|--------------|--------------------------------|-------------|
| 1 | 20-0093-0000 | HEAD ASSEMBLY | 1 |
| 2a | 20-0094-0000 | UK POWER CORD ASSEMBLY | 1 |
| 2b | 20-0117-0000 | AUSTRALIAN POWER CORD ASSEMBLY | 1 |
| 2c | 20-0122-0000 | EURO POWER CORD ASSEMBLY | 1 |
| 3 | 20-0095-0000 | TOP COVER ASSEMBLY | 1 |
| 4 | 20-0096-0000 | POWER SWITCH ASSEMBLY | 1 |
| 5 | 20-0097-0000 | MIDDLE SEAT ASSEMBLY | 1 |
| 6 | 20-0098-0000 | VAC MOTOR ASSEMBLY | 1 |
| 7 | 20-0099-0000 | BASE COVER ASSEMBLY | 1 |
| 8 | 20-0100-0000 | FILTER ASSEMBLY | 1 |
| 9 | 20-0101-0000 | TANK ASSEMBLY | 1 |
| 10 | 20-0102-0000 | TANK & CLIP ASSEMBLY | 1 |
| 11 | 20-0103-0000 | SUCTION COUPLER ASSEMBLY | 1 |
| 12 | 3208BJ-01 | CASTOR (PACK OF 4) | 1 |
| 13 | 02-4594-0000 | PAPER BAG (PACK OF 10) | 1 |
| 14 | 20-0104-0000 | HOSE & CONNECTOR ASSEMBLY | 1 |
| 15 | 20-0105-0000 | EXTENSION WAND ASSEMBLY | 1 |
| 16 | 20-0106-0000 | NOZZLE SET | 1 |
| 17 | 20-0107-0000 | DRY NOZZLE ASSEMBLY | 1 |

Drawing/Part Number
09-1085-0000

| Issue | Amendments | Sig./Date |
|-------|-----------------|------------------|
| A | NEW DRAWING | 02.04.07 M.C. |
| B | KIT 10 AMMENDED | 04.10.07 M.C. |



| | | | | | |
|-----------------|--|------------------|--|---|-------------------------------------|
| | <p>3RD ANGLE PROJECTION DIMENSIONS IN MILLIMETRES DO NOT SCALE DRAWING © COPYRIGHT</p> | Material ----- | General Tolerance ±0.25 | TRUVOX™ INTERNATIONAL LIMITED | |
| | | Finish ----- | Scale N.T.S. | Title VALET 10 GENERIC ASSEMBLY DRAWING | Drawing/Part Number 09-1085-0000 |
| Drawn M.D.C. | Checked M.D.C. | Date 02.04.07 | <div style="border: 1px solid black; padding: 2px; display: inline-block;">RED ON MASTER</div> | | |